

Local Results Analysis

A summary of the local results of the national Neighbourhood Alert annual member survey October 2023



WARWICKSHIRE

6,930 (1,05 million)
Recipients

Emails sent to registered members in the Warwickshire area (946 interacted)

909 (108,690)
Respondents

Answered at least one question (all questions non compulsory)

13.1% (10.3%)
Response rate

Response rate for members in area

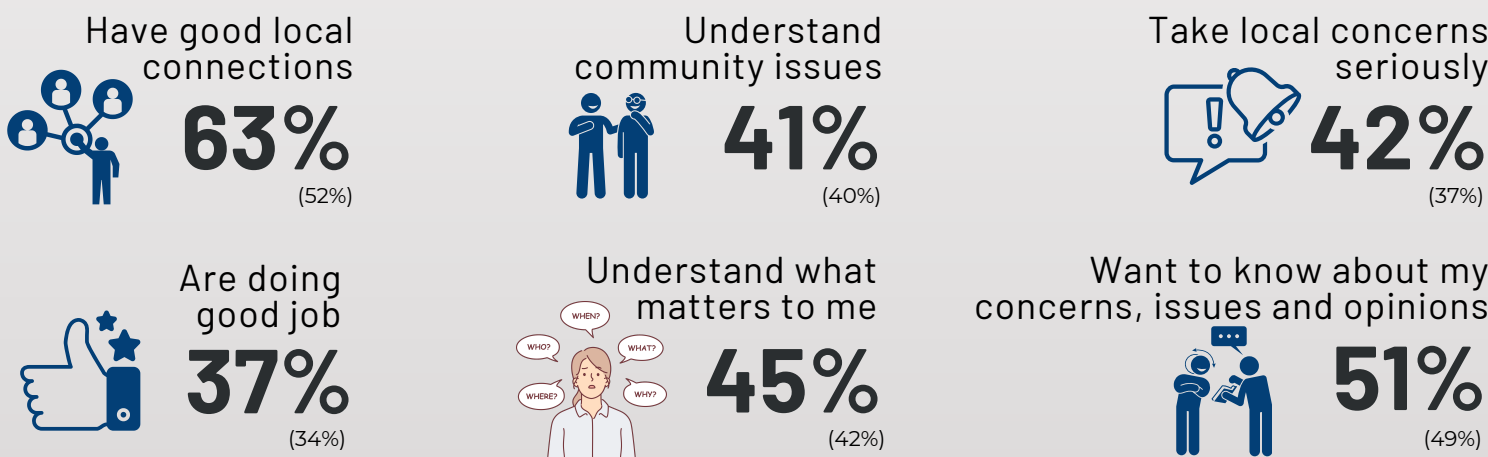
(Note: All figures shown in brackets represent the equivalent national figure).

Reach

Registered members, database size, message sharing and total potential reach in Warwickshire

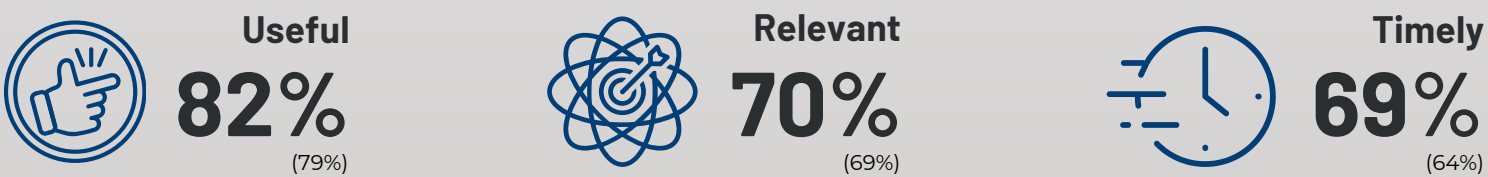


I feel that my local police...



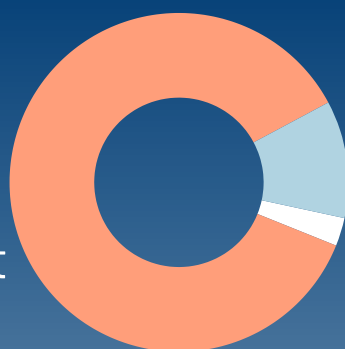
Feedback

Percentage that agreed (or strongly agreed) that messages in the last year were...



Message quantity

86.1%
About right



11.2% Too few

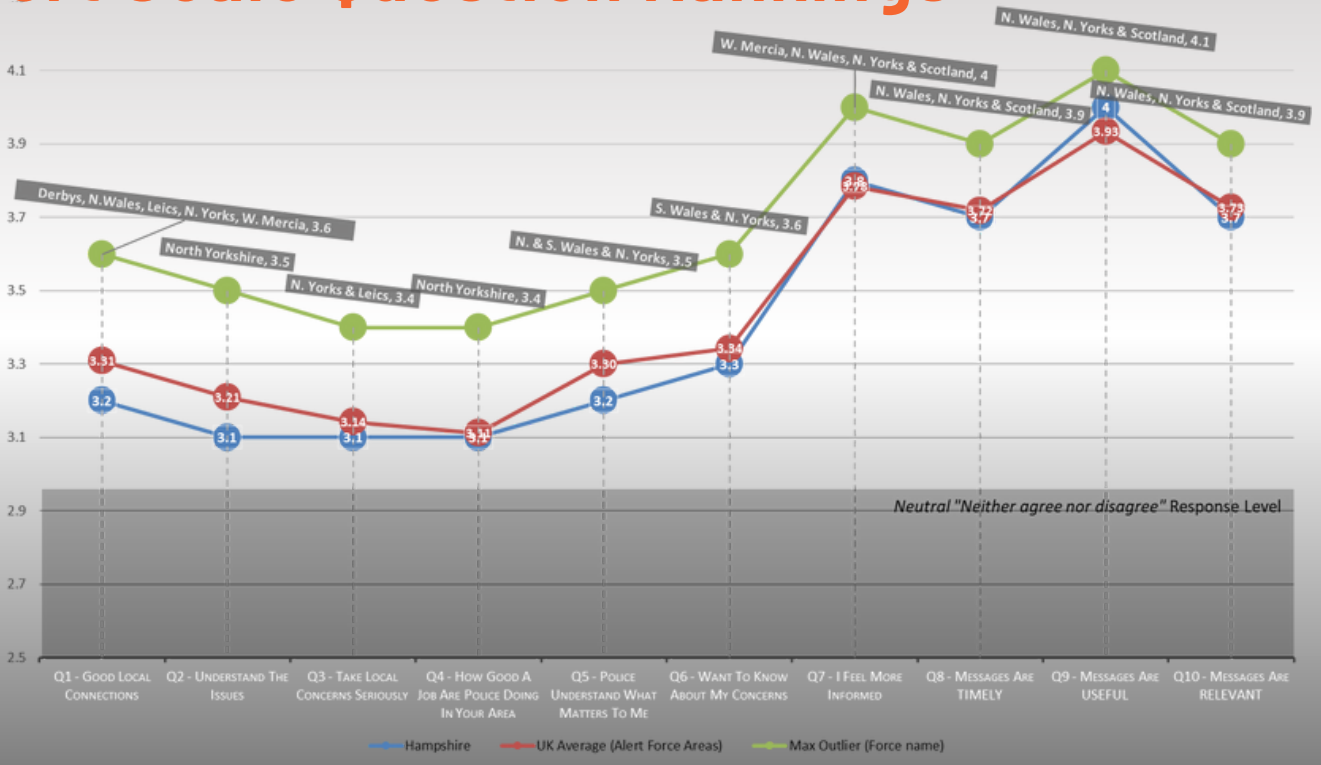
2.7% Too many

Impact

Evaluating the effect of the messages received over the last 12 months



Likert Scale Question Rankings



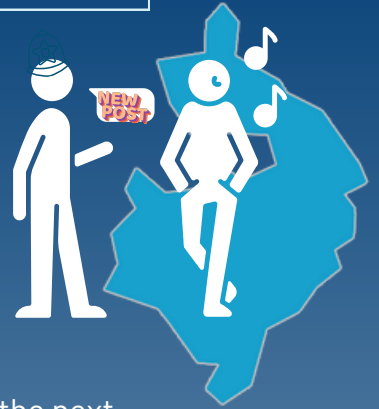
Not Social Media

Comparison with social media reach and trust

Percentage of members in your area that do NOT follow Warwickshire police on social media

(inc. Facebook, Instagram, Nextdoor, X or WhatsApp)

55% (63%)



% that trust Warwickshire Alert

92% (91%)



Facebook is the next most trusted channel

33% (31%)

A Social Media Springboard



X (Twitter)

82

Facebook

464

48%
of these respondents would forward relevant messages if they got them first

617
Channels used by registered respondents

Whatsapp

434

Nextdoor

93

LinkedIn

80

Instagram

133

775,265

Potential force-wide social media groups & accounts (if all members did the same)

41,482
Social channels, timelines, groups and accounts available from respondents

Appetite for local, relevant information



Top key information members want to see on Local Pages:

Local NPT members and contact information

What police messages have been sent to my area

Summary of what people in my area are saying are the main concerns in the area

64% (57%)

442 respondents in your area said a local area page would be useful to them